



# Warwickshire's Municipal Waste Management Strategy

*Annual Progress Report – Draft V1  
January 2007*

---

Produced by the Warwickshire Waste Partnership

 **recycle** for Warwickshire

## Contents

1	Introduction .....	3
2	Progress against key objectives, actions and indicators .....	4
3	Progress with the Implementation of Warwickshire's Municipal Waste Management Strategy .....	10
4	Next Steps .....	12

## Appendix A – Contact details Warwickshire Waste Partnership Members

Draft

# 1 Introduction

## 1.1 Progress against targets in Warwickshire's Municipal Waste Management Strategy – Review year 2005/06

Warwickshire's Municipal Waste Management Strategy was adopted by the Warwickshire Waste Partnership in October 2005 and launched in January 2006.

By adopting the Waste Strategy, the Warwickshire authorities have agreed to work towards a number of quantifiable objectives which were identified in the Strategy.

It was agreed that progress towards achieving our targets would be reviewed and reported on an annual basis.

This report provides a summary of our progress against our targets and also progress with the implementation of the Waste Strategy.

The key objectives agreed in the Strategy were:

- To reduce the amount of waste generated in Warwickshire
- To develop integrated, sustainable solutions for managing waste in Warwickshire
- To meet landfill diversion targets established by the WET Act 2003 (diversion of Biodegradable Municipal Waste)
- To meet and exceed statutory recycling and composting targets
- To work in partnership with each other and other stakeholders to produce and implement the Strategy.
- To encourage public participation in the implementation and review of the Waste Strategy
- To regularly review and update the Strategy and implementation programme

## 2 Progress against key objectives, actions and indicators

Warwickshire's Municipal Waste Management Strategy established a number of key targets and objectives that the members of the Warwickshire Waste Partnership agreed to work towards.

The following tables provide a list of our targets and objectives and summarise our performance against the targets. Where appropriate, 2005/06 waste data has been used.

### 2.1 To reduce the amount of waste produced in Warwickshire

Waste prevention is at the top of the waste hierarchy followed by waste reduction. Reducing the amount of waste that we produce in Warwickshire is critical to the development of sustainable waste management practices.

In recognition of the importance of waste reduction and prevention, the Warwickshire Waste Partnership is in the process of developing a Waste Minimisation Strategy (this will include waste prevention and reduction). The Waste Minimisation Strategy will identify how we propose to reduce the amount of municipal waste that is produced in Warwickshire. It is anticipated that the Strategy will be published in Spring 2007.

Target/Action	Indicators	Progress
Aim to reduce the quantity of waste collected per head, not exceeding 544kg per inhabitant.	Annual kg of waste produced per person.	Figures for 2005/06 show that the annual kg of waste produced per head was 550kg. This is less than the 2004/05 figure which was 557kg but some way off the target that we have set ourselves of not exceeding 544kg per head. However we are optimistic that we will reduce the amount of waste generated in 2006/07.
To develop a waste prevention and minimisation strategy	Waste Prevention and minimisation strategy developed by 2006/07.	The Waste Minimisation Strategy has been drafted and will be completed by Spring 2007.
To increase reuse of materials in Warwickshire	Number of reuse shops at Household Waste Recycling Centres (HWRCs).	There are now two dedicated reuse shops which are operated by local charities at Burton Farm HWRC in Stratford-upon-Avon and Princes Drive in Leamington Spa. Hunters Lane HWRC is being redeveloped in 2007 and a third dedicated reuse shop will be opened at the new site.
	Number of furniture reuse schemes in Warwickshire	There are six dedicated furniture reuse schemes in Warwickshire which are primarily operated by the community/voluntary sector. With the support of the Warwickshire Waste Partnership, two of these schemes became operational in 2006- 2nd Chance in Nuneaton and Goods Again based at Onley Prison near Rugby.

## 2.2 To develop integrated, sustainable solutions for managing waste in Warwickshire

Positive progress has been made against these targets with a reduction in the amount of waste being landfilled and an increase in the amount of material recycled and composted.

Target/Action	Indicators	Progress
To reduce reliance on landfill as a primary means of waste disposal.	Reduction in the overall tonnages of waste disposed of to landfill.	In 2005/06 67% (210,323 tonnes) of municipal waste generated in Warwickshire was disposed of to landfill. This is a reduction of 4% on the previous year, where 71% (223,859 tonnes) was disposed of to landfill.
	Levels of recycling, composting and recovery.	Municipal waste figures  Countywide recycling 14% (13%) Countywide composting 14% (13%) Countywide recovery 5% (3%)  Figures in brackets are for 2004/05
Minimise so far as is practicably possible the distance that waste is transported throughout the County.	Monitor distance of journeys.	Where possible vehicle journeys are minimised.
Monitor the development of new waste treatment technologies.	Review development and status of new technologies on a regular basis.	Officers receive information from technology providers and attend seminars on new waste treatment technologies as well as monitoring the development of new technologies through the information provided nationally by Defra and the Environment agency. Officers have also carried out a soft market testing exercise with representatives from industry who provided details on new and emerging waste technologies.
Investigate and implement where practicable the use of cleaner fuels when collecting (including general refuse collection) and transporting waste and for use in vehicles used at HWRC.	Number of vehicles operating on alternative fuel sources.	Currently one vehicle that services Burton Farm HWRC uses an alternative fuel (biofuel) .

### 2.3 To meet landfill diversion targets established by the WET Act 2003 (diversion of Biodegradable Municipal Waste (BMW)).

An interim landfill trading strategy has been developed which proposes putting surplus landfill allowances up for sale using the established national trading mechanism.

Target/Action	Indicators	Progress
Develop landfill allowance trading Strategy by December 2005.	Strategy will be updated regularly in accordance to changes in the market for Landfill Allowances.	An interim Landfill Allowance Trading strategy was approved by Warwickshire County Council's Cabinet in January 2007. The Strategy proposes that surplus allowances are put up for sale using the national landfill allowance trading system
Development of treatment/disposal procurement Strategy 2005-2012	Development of treatment facilities and subsequent diversion of BMW from landfill (in tonnes).	We are currently in the pre-procurement phase of implementing the Waste Strategy. In the first year of monitoring (2005/06), 136,105 tonnes of Warwickshire's biodegradable municipal waste was landfilled, which is 25,002 tonnes less than our annual allocated allowance of 161,107 tonnes of BMW for the year.

### 2.4 To meet and exceed statutory recycling and composting targets

All of the Warwickshire authorities met their 2005/06 statutory composting and recycling targets. The Government has set interim targets for 2006/07. The minimum target is 20%, which all the Warwickshire authorities will meet. The revised National Waste Strategy is due for publication in March and it is anticipated that further targets will be set.

The Warwickshire Waste Partnership is continuing to promote and support home composting. A Master Composter scheme has been established to promote and encourage home composting.

Target/Action	Indicators	Progress
To optimise recycling and composting within Warwickshire.	Number of households served by separate green waste collection service.	Approximately 150,000 households are currently served by a kerbside green waste collection service.
Aim to achieve enhanced, countywide recycling targets of between 40-45% by 2009/10.	Recycling and composting rate %	<p>Countywide household recycling and composting rate of <b>30%</b> (28% in 2004/05).</p> <p>The figures in bold show individual district recycling figures (excluding figures from HWRCs in their area)</p> <p><b>District recycling performance</b>            North Warwickshire Borough Council <b>21%</b></p> <p>Nuneaton and Bedworth Borough Council <b>25%</b></p> <p>Rugby Borough Council <b>18%</b></p>

		Stratford-on-Avon District Council <b>39%</b> Warwick District Council <b>28%</b>
Extend home composting	Number of households estimated to be composting at home.	Currently 23,000 properties in Warwickshire have a home compost bin this equates to 12.5% of households. The Warwickshire Waste Partnership is continuing to provide subsidised composts to the public through the WRAP home composting scheme.
Develop improved HWRC infrastructure, increasing the type of materials that can be collected and subsequently recycled. Aim to reach recycling levels of 60% at all sites.	Performance of individual HWRCs (recycling rate%).	The average recycling rate achieved at HWRCs in Warwickshire in 2005/06 was 42%. Progress is being made towards achieving our target of 60% and early indications for 2006/07 suggest that all sites have improved on the previous years performance.  <i>2005/06 figures</i> Burton Farm 62% Cherry Orchard 51% Princes Drive 46% Hunters Lane 40% Shipston 39% Grendon 39% Wellesbourne 38% Stockton 31% Judkins 29%
Development of a phased improvement plan for HWRCs over the next 5 years.	Number of sites redeveloped	Hunters Lane HWRC is scheduled for redevelopment in 2007 and should be completed by Spring 2008.
HWRC contracts maximise re-use and recycling, aim to recycle 60% at HWRC's	Recycling targets set for individual contractors. Penalty and bonus system in place.	There is a scheme in place for six sites, a revised scheme will be developed for remaining sites (apart from Burton Farm) when contracts for the sites are renewed.

## 2.5 Work in partnership with each other and other stakeholders to produce and implement the Strategy.

Work on the development of the Warwickshire Waste Partnership is ongoing, with further developments possible through Local Area Agreements and proposals for enhanced two-tier status.

The Government has also recently announced that it will introduce new powers through the Local Government Bill to allow the creation of Joint Waste Authorities (JWAs). This measure aims to help authorities that wish to put joint working on waste on a statutory footing to enable stronger partnership working on waste.

All the above measures will be taken account of when considering how to develop and strengthen the Warwickshire Waste Partnership.

Target/Action	Indicators	Progress
Increase the potential for working together more formally.	Development of the Warwickshire Waste Partnership.	This work is ongoing.
	Establishment of formal partnership with Memorandum of understanding.	A memorandum of understanding has been agreed by all members of the Warwickshire Waste Partnership..
Investigate the potential for joint waste contracts.		The feasibility of entering into joint contracts for services at a district level has been investigated and the County Council is also reviewing the feasibility of working with adjoining authorities.
Examine the benefits of working with other authorities outside Warwickshire.	Membership of the Midlands Recycling Consortium.	Warwickshire County Council is still a member of the Midlands Recycling Consortium – however it is no longer the lead authority – this role was taken over by Lincolnshire County Council.  Warwickshire is also reviewing the potential to work with adjoining authorities on a sub-regional basis to implement aspects of Warwickshire's Municipal Waste Management Strategy.
Investigating the possible benefits of joint purchasing and negotiating.	Performance of Midlands Recycling Consortium (tonnage recycled through the Consortium)	In 2005/06 no opportunities arose for joint purchasing through the Consortium.

## 2.6 Encourage public participation in the implementation and review of the Waste Strategy

All information relating to the development of Warwickshire's Municipal Waste Management Strategy has been put on Warwickshire Waste Partnership's webpages (currently hosted by Warwickshire County Council).

In addition to this a supplement was published in the October issue of the Warwickshire View, which provided information and advice on recycling in Warwickshire.

Target/Action	Indicators	Progress
Keep the public informed with progress on local and national target	Provide web-based feedback – updated regularly to reflect changes in performance.	The Waste Strategy and all documents used to develop it are on the County Council's website. In 2007 updates will be provided on the implementation of the Waste Strategy.
		Brochure published in the Warwickshire View on progress with recycling and composting and identified some of the challenges ahead.



## 2.7 Regularly review and update the Strategy and implementation programme

This is the first annual report summarising progress towards meeting the targets identified in the Warwickshire's Municipal Waste Management Strategy.

Target/Action	Indicators	Progress
Review the Strategy every 5 years.	Feedback on changes and put information on the Web. First review in 2008/09	Further information on the implementation of the waste strategy will be posted to the web throughout 2007
Annual reporting on progress with targets and actions	Progress reported on web	Once approved by the WWP the report will be posted on the Web.

Draft

### 3 Progress with the Implementation of Warwickshire's Municipal Waste Management Strategy

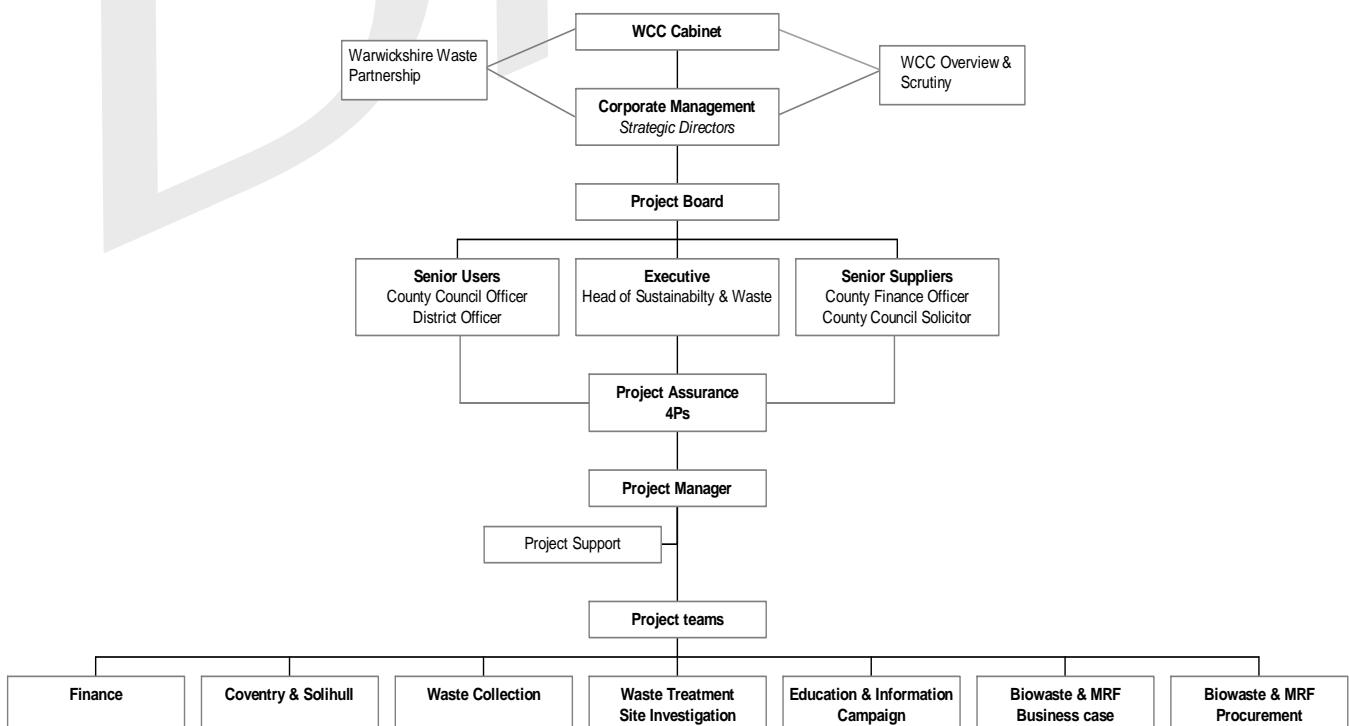
Warwickshire's Municipal Waste Management Strategy establishes a framework of how the Warwickshire authorities propose to manage Warwickshire's waste. The next stage for the Warwickshire Waste Partnership is to put together plans to implement Warwickshire's Waste Strategy.

#### 3.1 Waste Treatment Infrastructure

Warwickshire County Council is overseeing the project to put in place the necessary waste treatment infrastructure required to implement the waste strategy. A multi-disciplinary Project Board has been set up to manage the project. The Board consists of officers from the county council and a district representative. The work of the Board is overseen by a Corporate Management Board, which is composed of three Strategic Directors. Ultimately the Project Board reports to Warwickshire County Council's Cabinet and Overview and Scrutiny Committees and the Warwickshire Waste Partnership.

As with the development of the Waste Strategy it will also be necessary for key decisions to be referred back to all respective partner committees for approval.

There are a number of project teams which are working on different aspects of the strategy implementation. The following organisation chart provides an overview of the overall project management structure.



Members of project teams include both district and county council officers. In some instances consultants have been appointed to provide specialist technical support and advice.

The direction and management of the project will be periodically assessed by independent external assessors (project assurance). This assurance will be carried out by the 4Ps<sup>1</sup>

The process of assessment is called a Gateway Review. It is anticipated that we will undertake our first Gateway Review in June 2007.

### **3.2 Waste Collection and recycling**

The District Councils are leading on enhancing kerbside collection services for recyclable materials. The District Councils are currently considering how they can increase the number of recyclables it is possible to collect from the kerbside – in particular the collection of plastic and cardboard.

Some Districts are also considering changes to the collection frequency of recyclables and residual waste, so-called alternate weekly collection, which has been demonstrated to increase recycling.

We are also in the process of developing plans to upgrade and redevelop a number of household waste recycling centres. Hunters Lane HWRC in Rugby is due for redevelopment in late 2007.

---

<sup>1</sup> 4ps is local government's project delivery specialist. 4ps works in partnership with all local authorities to secure funding and accelerate the development, procurement and implementation of PFI schemes, public private partnerships, complex projects and programmes.

## 4 Next Steps

- ⦿ Determine what changes need to be made to reach our 2010 recycling targets (infrastructure requirements).
- ⦿ Consider our long-term waste treatment options and develop the business case for taking forward our preferred option(s).
- ⦿ Determine the impacts that the new National Waste Strategy<sup>2</sup> will have on our proposals.
- ⦿ Develop structured information/education campaign to encourage participation in existing recycling schemes and initiatives and to support any potential changes to schemes.
- ⦿ Maintain and update dedicated webpages on the work of the Warwickshire Waste Partnership and progress with the implementation of Warwickshire's Municipal Waste Management Strategy

---

<sup>2</sup> The revised National Municipal Waste Management Strategy is due to be published in March 2007.

## Appendix A - Contact Details Warwickshire Waste Partnership Members

### North Warwickshire Borough Council

Recycling Officer  
The Council House  
South Street  
Atherstone  
Warwickshire  
CV9 1BD

Tel: 01827 719433  
Email: [environmentalhealth@northwarks.gov.uk](mailto:environmentalhealth@northwarks.gov.uk)  
Website: [www.northwarks.gov.uk](http://www.northwarks.gov.uk)

### Nuneaton and Bedworth Borough Council

Recycling Officer  
St Marys Road Depot  
St Marys Road  
Nuneaton  
Warwickshire  
CV11 5AR

Tel: 024 7637 6010  
Email: [refuse@nuneatonandbedworth.gov.uk](mailto:refuse@nuneatonandbedworth.gov.uk)  
Website: [www.nuneaton@bedworth.gov.uk](http://www.nuneaton@bedworth.gov.uk)

### Rugby Borough Council

Recycling officer  
Council Depot  
94 Newbold Road  
Rugby  
Warwickshire  
CV21 1DH

Tel: 01788 533328  
Website: [www.rugby.gov.uk](http://www.rugby.gov.uk)

### Stratford on Avon District Council

Streetscene  
Church Street  
Stratford-upon-Avon  
Warwickshire  
CV37 6HX

Tel: 01789 260616  
E-mail: [streetscene@stratford-dc.gov.uk](mailto:streetscene@stratford-dc.gov.uk)  
Website: [www.stratford-dc.gov.uk](http://www.stratford-dc.gov.uk)

### Warwick District Council

Recycling Officer  
Riverside House  
Milverton Hill

Leamington Spa  
Warwickshire  
CV32 5HZ

Tel: 01926 450000  
Email: [ehwaste@warwickdc.gov.uk](mailto:ehwaste@warwickdc.gov.uk)  
Website: [www.warwickdc.gov.uk](http://www.warwickdc.gov.uk)

**Warwickshire County Council**

Waste Management  
PO BOx 43  
Shire Hall  
Warwick  
Warwickshire  
CV34 4SX

Tel: 01926 412593  
Email: [waste@warwickshire.gov.uk](mailto:waste@warwickshire.gov.uk)  
Website: [www.warwickshire.gov.uk/recycling](http://www.warwickshire.gov.uk/recycling)

Draft